

**ARITECH**

**CP 4203**

**OPERATING INSTRUCTIONS**

# INDEX

	Page
Normal Display Conditions	3
Special Display Conditions, and Zone Types	4
Operator Commands	6
Good Housekeeping	6
Switching System On and Leaving the Building for Split System using Shared Keypads	7
Switching System on and Leaving the Building for Split System with Shared Keypads Only	8/9
Switching Off the System - Entering the Building	10
Switching System On/Off in Part Guard	11
Quick Set No Buzzer	12
Forced Arming	13
Inhibit Facility	14/15
Entering the Building after an Alarm Activation	16
Operator Memory Facility	17
Bell Test Facility	18
Chime Facility	19
Fire Zone Facility	20
Change Operator Code	21
Nitewatch Outdoor Lighting System	22
Manually Switch on Floodlights	23
Walk Test Outdoor Detectors	24
Nitewatch Buzzer Alert	24

## NORMAL DISPLAY CONDITIONS

A DUAL SEVEN SEGMENT DISPLAY on each keypad communicates all information from the system to the engineer or end user.

### Decimal Point Dots

**Single System (or Split System with Separate keypads)**  
Dot on right hand display = system armed.

**Split System with Shared Keypads**  
Dot on right hand display = SYSTEM A armed.  
Dot on left hand display = SYSTEM B armed.

1 to 48	Zones open or activated
r1 to r4	Remote Keypads, 1 to 4
E1 to E4	Remote Line Expanders, 1 to 4
F0	Nitewatch floodlights OFF
F1	Nitewatch floodlight zone 1 ON
F2	Nitewatch floodlight zone 2 ON
H1, H2, etc	Inhibited zones
HH	All zones inhibited
P1	Total power failure. Mains and battery
P2	Mains failure. System operating on the battery
P3	Battery Low
PH	System Switched ON, armed by using the PART GUARD command.

## SPECIAL DISPLAY CONDITIONS

- LF = Telephone line fault
- LC = Telephone line fault cleared
- FC = Digital Communicator failed to communicate
- CA = System cannot be armed, ENGINEER RESET is active  
A two-digit number may alternate with CA.
- oA = The "other alarm system" has caused the activation.  
This is only seen when the SPLIT SYSTEM is programmed. It is displayed when the code, entered to stop the audibles sounding, is not a code for the SYSTEM that caused the alarm, i.e. SYSTEM B activates and SYSTEM A operators code is used to switch OFF the COMMON AUDIBLES.

## ZONE TYPES

Pressing # when a zone number is being displayed will cause the "type" to be displayed.

- A = Alarm zone
- t = Tamper zone
- PA = P.A. zone
- FA = Fire zone
- EE = Exit / Entry Zone
- Y = Keyswitch
- L = Light Zone
- tC = Technical Zone

If any of the following conditions are displayed contact the alarm company immediately.

t<sub>1</sub>-t<sub>4</sub>, tP, P1, P3, nd, nC, dn, nA.

## OPERATOR COMMANDS

The following commands are available, except with SPLIT SYSTEM using SHARED keypads.

- 0 # 4 Quick set the system with Exit time.
- 0 # 5 Quick set without Exit time (instant arming).
- 0 # 6 Switch Chime ON
- 0 or 0 # 6 Switch Chime OFF. Dependent on programming
- 0 # 7 Part Guard arming
- 0 # 9 Test all audibles

The following commands are ALWAYS available.

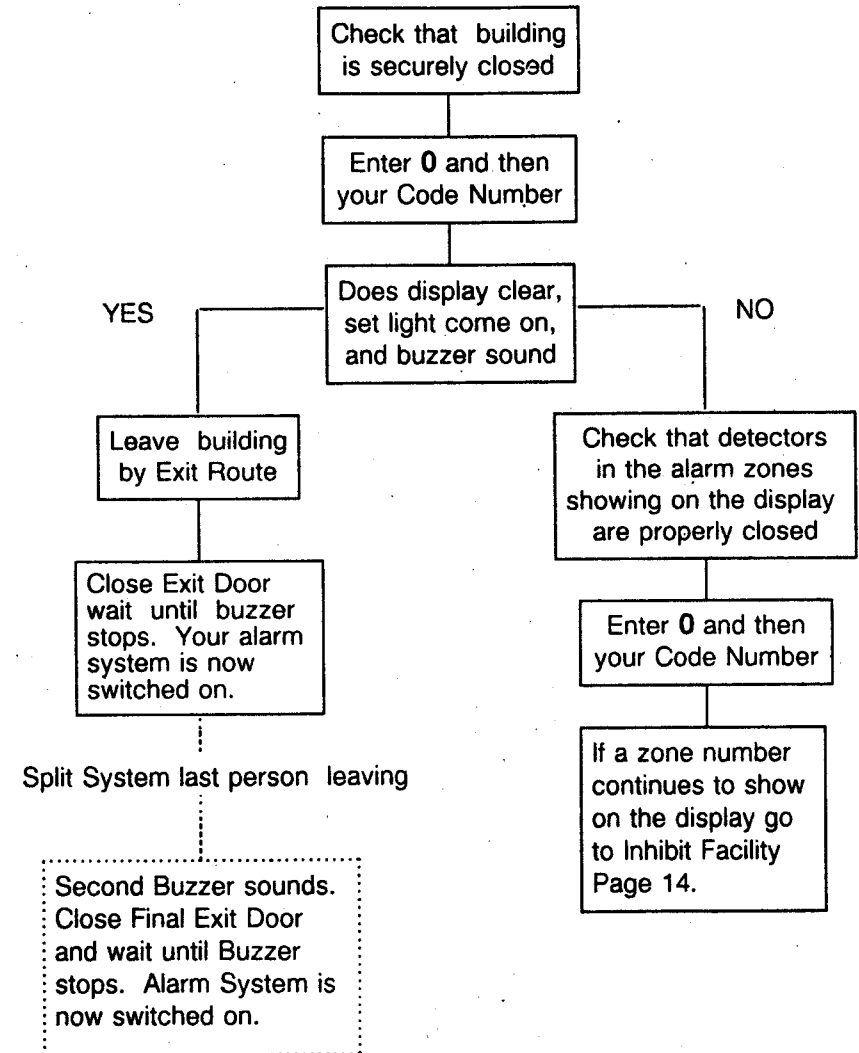
- 0 (Operator Code) Arm or disarm the system
- 0 (Operator Code \*\* Forced Arming, if programmed
- 0 # 8 Display the operators memory
- # Display the ZONE TYPE for the zone on display
- 0 Clear the display

## GOOD HOUSEKEEPING

Before setting up your alarm system, it is advisable that you make a tour of inspection of the protected areas to ensure that false alarms due to badly closed doors or moving objects are prevented.

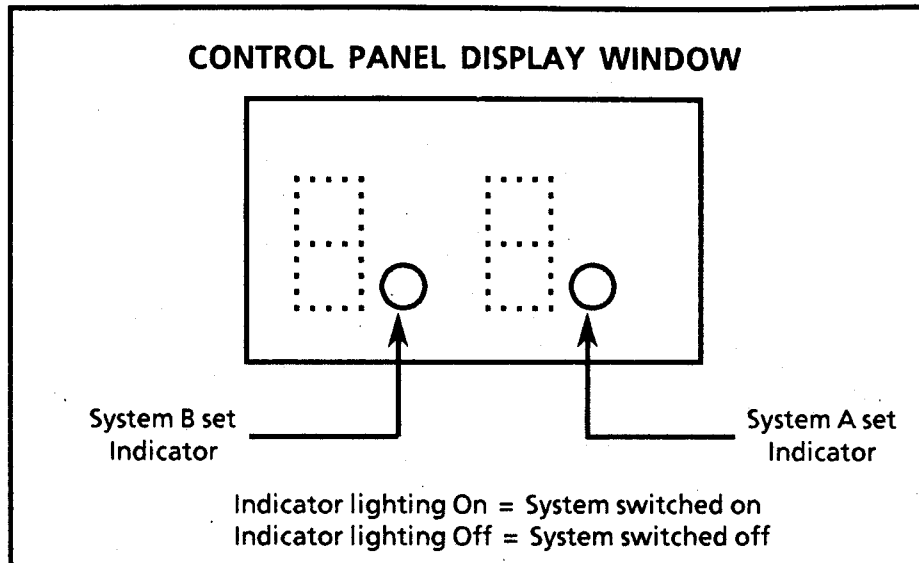
- A) Check that all doors and windows are securely locked.
- B) Check that there is no possibility of objects falling in front of movement detection devices.
- C) Ensure that a path between beams is kept clear.
- D) Should a fault occur on your alarm system, you should call your alarm company without delay.

## SWITCHING SYSTEM ON AND LEAVING THE BUILDING (for SPLIT SYSTEM using SHARED KEYPADS, see page 8)



# SWITCHING SYSTEM ON AND LEAVING THE BUILDING

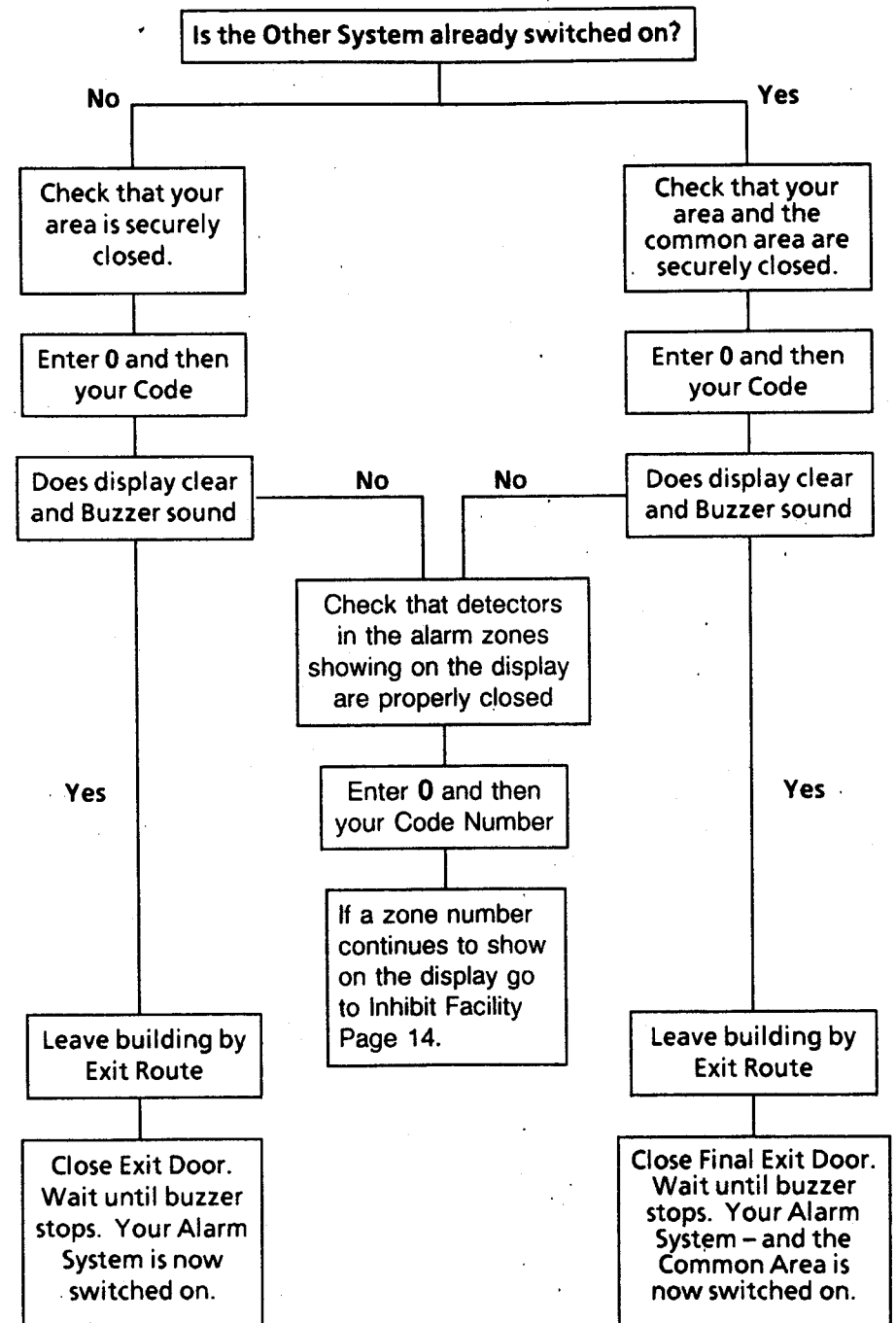
(for SPLIT SYSTEM with SHARED KEYPADS only)



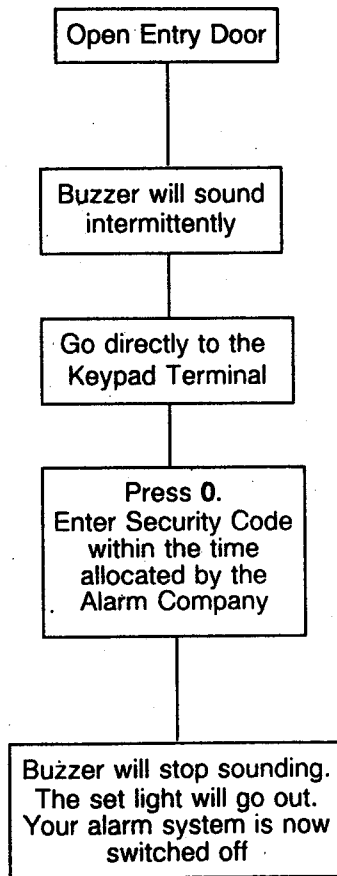
System A: applies to the following areas of the premises:

System B: applies to the following areas of the premises:

Common Area: applies to the following areas of the premises:

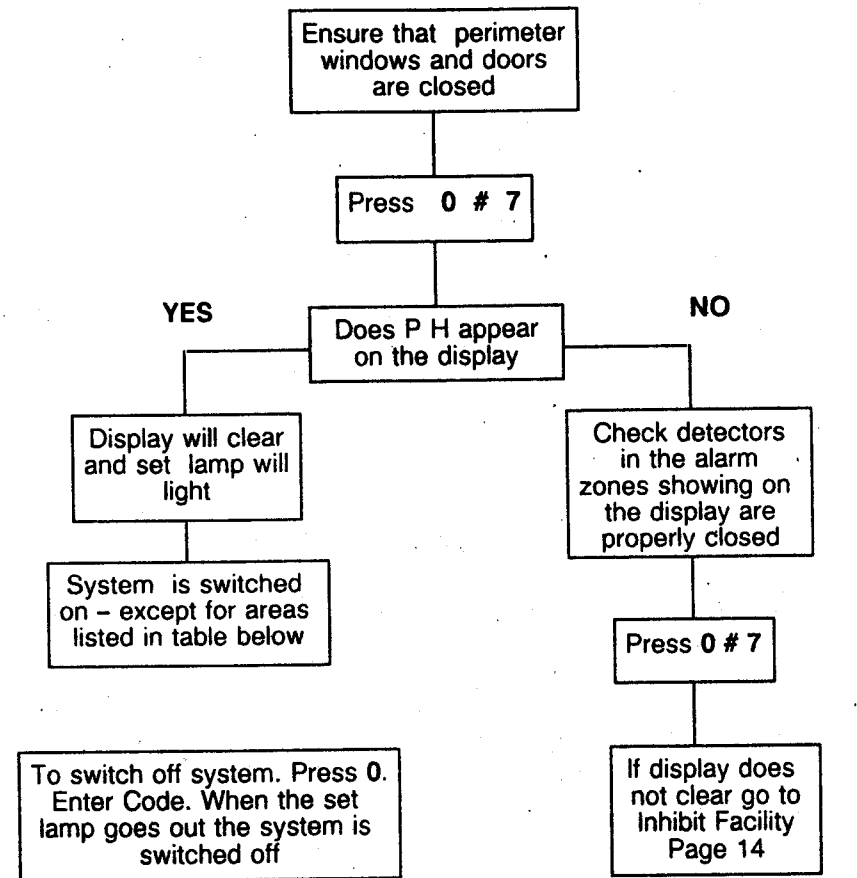


# SWITCHING OFF THE SYSTEM - ENTERING THE BUILDING



# SWITCHING SYSTEM ON/OFF IN PART GUARD

(Not available for SPLIT SYSTEM with SHARED KEYPADS)



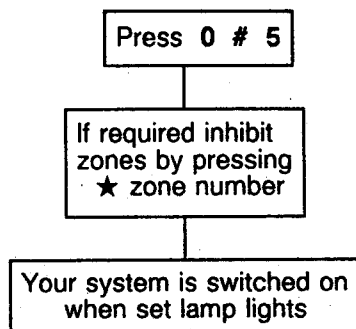
System A (Single System)

System B

## QUICK SET NO BUZZER

(Not available for SPLIT SYSTEM with SHARED KEYPADS)

To switch on your system instantly without the buzzer sounding, proceed as follows :



## PERSONAL ATTACK DURESS FACILITY

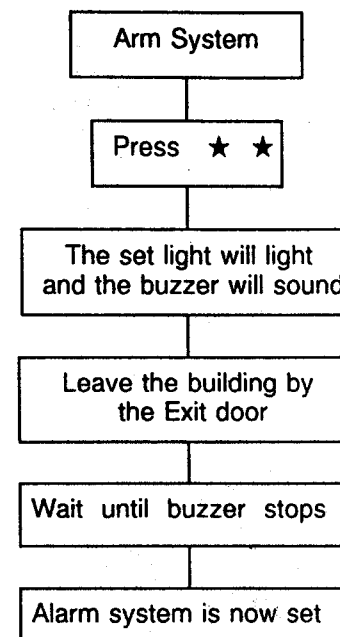
When your system is switched on a Duress Facility is available. This may be used if you are forced to switch off the alarm system.

When this facility is used a silent signal output is given from the panel which can be connected to communication equipment to send a signal to the police via the alarm company central station.

To operate the Duress Facility, enter the Duress Code assigned by the Alarm Installing Company, instead of your normal security code, to turn OFF your system.

## FORCED ARMING

The operator may arm the system when a number of zones are open without having to inhibit each zone separately. This is achieved as follows :

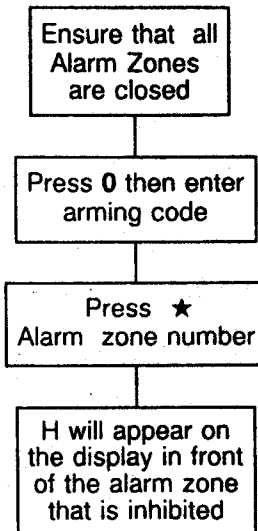


# INHIBIT FACILITY

The operator would use the Inhibit Facility when :

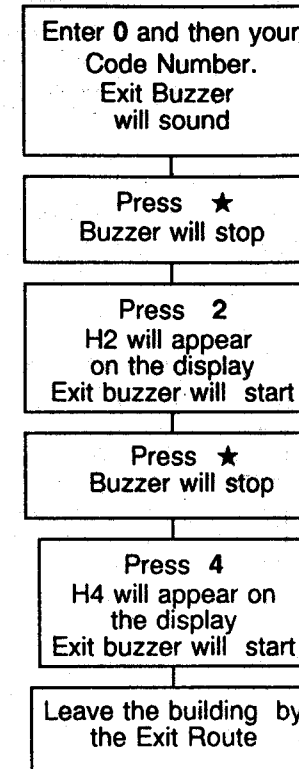
- A) He wishes to inhibit an alarm zone
- B) He wishes to inhibit an alarm zone with a permanent fault showing on the display

## PROCEDURE FOR INHIBITING ALARM ZONES



## EXAMPLE:

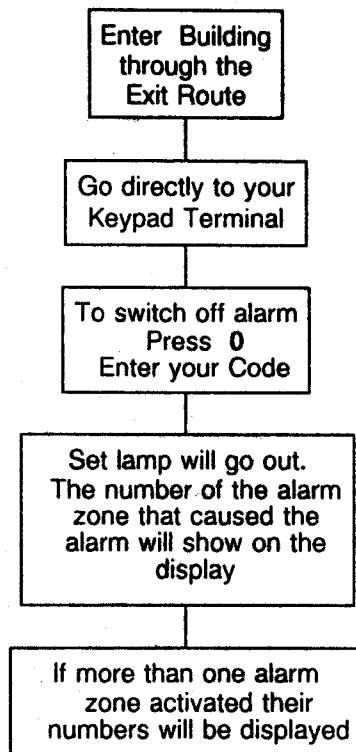
If you wish to leave the building and inhibit zone 2 and zone 4, proceed as follows:



IF THE INHIBIT PROCEDURE IS USED BECAUSE AN ALARM ZONE SHOWS PERMANENT FAULT CONTACT THE ALARM COMPANY AS SOON AS POSSIBLE.



## ENTERING THE BUILDING AFTER AN ALARM ACTIVATION



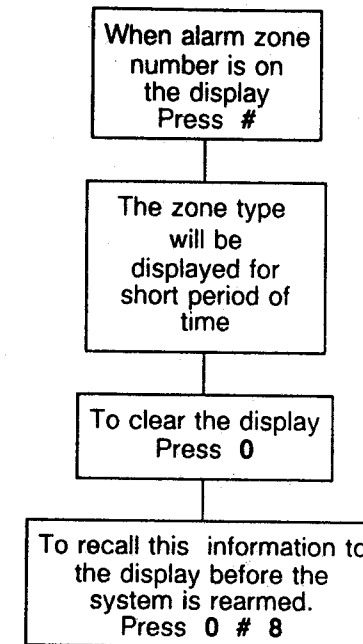
Where an activation has been caused by a tamper zone when the panel is off, this zone is now automatically isolated until the next time your code is entered again. All other tampers remain operational in the meantime.

**ALWAYS CONTACT THE ALARM COMPANY AFTER AN ALARM ACTIVATION.**

## OPERATOR MEMORY FACILITY

After an alarm activation the alarm zones that tripped will be shown on the display in sequence.

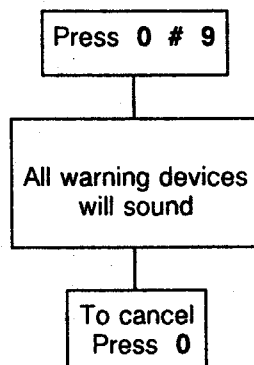
If the operator wishes to know the type of each zone activated, proceed as follows :



## BELL TEST FACILITY

(Not available for SPLIT SYSTEM with SHARED KEYPADS)

Before setting the alarm system the operator may wish to verify that all warning devices are working. Proceed as follows:



## CHIME FACILITY

(Not available on SPLIT SYSTEMS with SHARED KEYPADS)

This is used when your alarm system has been switched off.

The Chime sounds for 2 seconds when an alarm zone programmed for this facility opens.

### To use the Chime Facility

Press 0 # 6

#### Result

"c" appears on the display

OR

### To remove Chime Feature

Press 0

or to remove Toggle Chime

Press 0 # 6 again

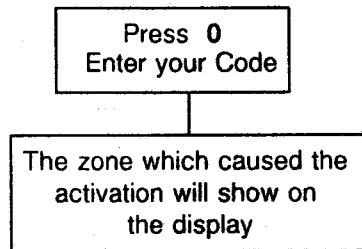
## CHIME ZONES

## FIRE ZONE FACILITY

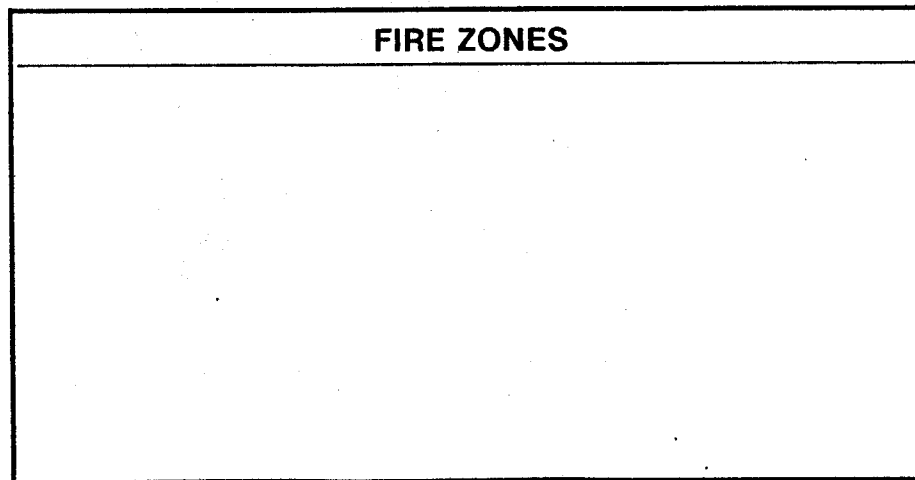
If fire detectors are connected to the alarm panel they will be active on a 24-hour basis.

If a fire detector activates the alarm the audible warning devices will sound intermittently one second on, one second off and the zone which caused the activation will flash on the display.

### TO SWITCH OFF FIRE ALARM



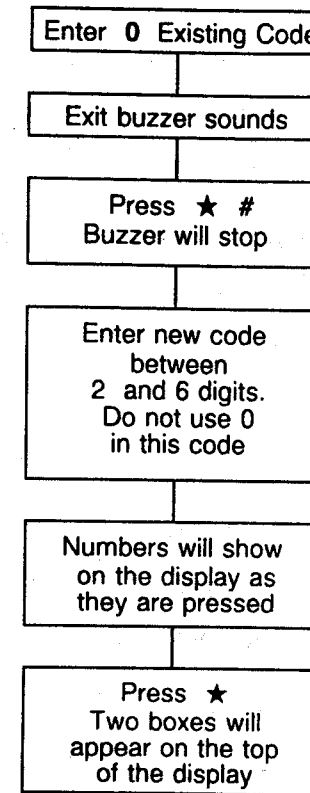
**NOTE:** This zone does not come back into the system until the next time a Security Code is entered.



## CHANGE OPERATOR CODE

The operator can generate a new security code by using his master code which is programmed for him by the alarm company.

The procedure to change your security code is as follows :



This indicates that the code has been accepted.

To clear the display Press 0

YOUR SYSTEM WILL NOW OPERATE FROM THE NEW CODE AND THE OLD CODE HAS BEEN CANCELLED.

# NITEWATCH OUTDOOR LIGHTING SYSTEM

## OPERATOR COMMANDS

- 0 ★ 1 Switch ON/OFF floodlight Output 1
- 0 ★ 2 Switch ON/OFF floodlight Output 2
- 0 ★ 3 Switch ON/OFF Walk Test for outdoor motion detectors
- 0 ★ 9 Switch ON/OFF complete operation of floodlights.
- 0 ★ 6 Switch ON Nitewatch Buzzer Alert feature
- 0 Switch OFF Nitewatch Buzzer Alert feature

## DISPLAY CONDITIONS

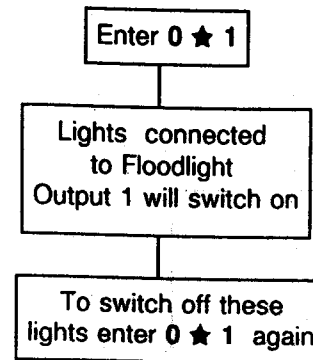
- F1 Floodlight Output 1 ON.
- F2 Floodlight Output 2 ON
- F0 Floodlight Output 1 or 2 OFF

Note 1: The above Operator Commands may only be used when the alarm system is switched OFF.

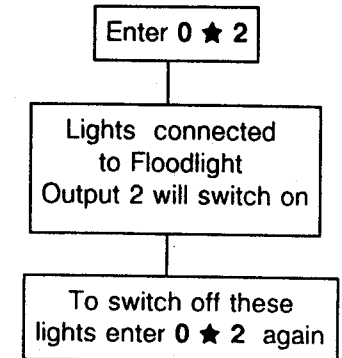
Note 2: 0 ★ 9 may be used to inhibit any further operation of the Nitewatch system. 0 ★ 9 should be entered again to restore operation.

# MANUALLY SWITCH ON FLOODLIGHTS

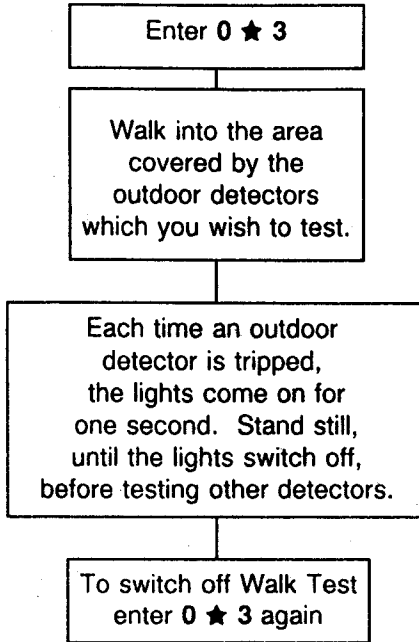
## Floodlight Output 1



## Floodlight Output 2



## WALK TEST OUTDOOR DETECTORS



## NITEWATCH BUZZER ALERT

